



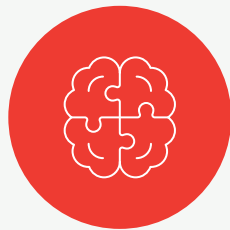
Human Machine Interfaces For Every Situation

ClickTouch is your one-stop-shop for Human Machine Interfaces (HMIs) – taking care of everything from start to finish. We design, manufacture and assemble HMIs that meet your exact preferences and requirements. So you can focus on what really matters for growing your business.

Why choose **ClickTouch**?

Product development requires a lot of planning, prioritising and managing, there are deadlines to meet and budget constraints. To make the venture a success, you need to keep an eye on the project while maintaining communication and relationships with an increasing number of suppliers and subcontractors around the world.

An experienced one-stop-shop handling your project from start to finish can often shorten a project's start-up time and learning curve. Of course, the key to success is finding a company that offers a partnership and not just a contract. For many clients, ClickTouch is such a reliable partner.



Knowledge and experience in your sector

Every sector has different requirements. If you need safety, reliability, robustness, sleek design or precision, we've got you covered. With decades of experience, we understand your business inside out, and always work together with you to seek out the best solution.



Lifelong support

A swift solution is essential in the event of a defect or fault. We guarantee lifelong support for your HMI, ensuring reliability in any situation – always adhering to industrial standards with the expertise and close partnerships to extend the lifespan of your product.



Know-how and innovation

Our extensive experience and know-how make us an exceptionally reliable partner for leading semiconductor manufacturers. We always stay up to date with any announcements – including innovations and phase-outs – to benefit you as the end customer.

“As a leading manufacturer of Fire, Gas and CO detection systems, we were on the lookout for a reliable partner. ClickTouch delivered perfect support throughout every stage of our project. Their expertise and insight allowed us to launch our entire initiative to the market swiftly and effectively.”

Technical Manager, Limotec

How do we tackle your project?

Complex development projects require thorough preparation and a meticulous approach. We guide and support you from start to finish throughout your project. Delivering high-quality results and working efficiently are crucial for us to achieve the desired outcome.

First, we have a chat with you. This allows us to understand your needs and any challenges you might be facing. Then we discuss potential solutions, evaluate their commercial potential and consider any possible risks.

1 Initial conversation

2 Quote

Our quote includes a clear action plan, timeline, technical specifications and a cost estimate. This gives you, the customer, a clear understanding of what to expect.

3 Specification document

After our consultation, we create a detailed specification document with all the technical details.

4 From concept to assembly

We take care of the entire process from concept development to production and assembly. This includes DFM guidance, technical analysis, DFA, prototyping and the full coordination of mass production including supply chain management and ESD packaging.

5 Open communication

We work in a very transparent way. You will know what to expect from us and we keep you regularly updated throughout the process. Open communication is key to our success.

Our groundbreaking innovations

ClickTouch is known for groundbreaking innovations – from patented solutions for membrane keyboards to introducing the world's first capacitive touchscreen in 2000.

Our R&D department is continuously striving for optimisation and innovation, with customer and partner feedback playing a crucial role.

Our innovations over the years:

1986 - Patented solution for membrane keyboards

1995 - Introduction of resistive touch screen

2000 - First designed capacitive touch screen worldwide

2003 - Premiere of the first designed translucent capacitive key

2014 - Capacitive 'metal touch', our 'UniCTouch'

2015 - AquaTouch

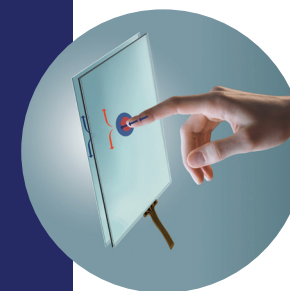
2017 - Introduction of nanotechnology

2019 - Launch of redundant touch technology 'TwoTouch'

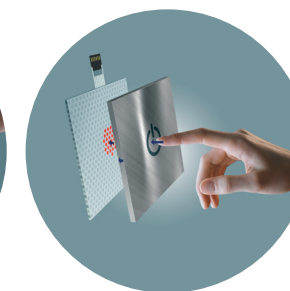
2021 - Fine-line and nanowire technologies

2024 - Hover and haptic touch

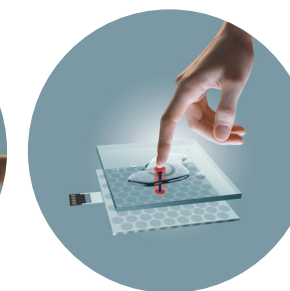
At ClickTouch, we're always innovating and developing new technologies. Constantly in evolution is our core value.



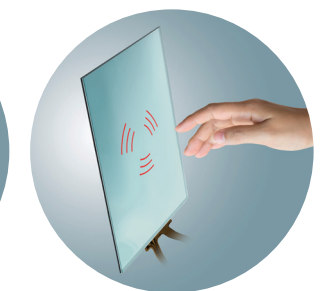
TwoTouch



UniCTouch



AquaTouch



HoverTouch

Use case machinery

A client in the agriculture sector approached us to develop a single integrated HMI to replace the various monitors they were currently using.

Problem

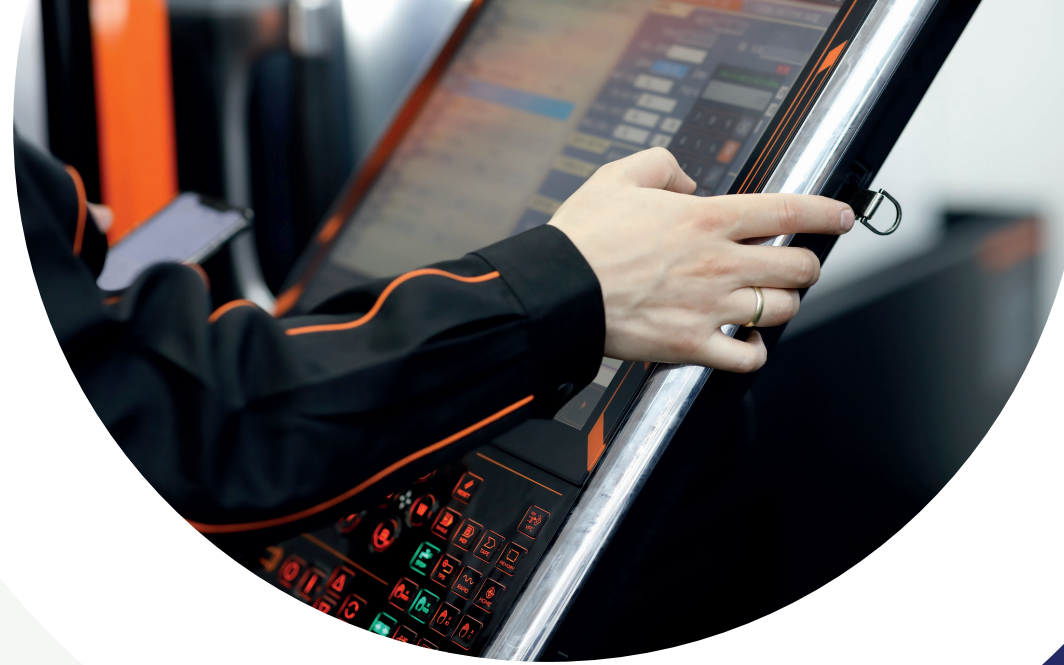
The client wanted to focus on software development and was looking for a reliable partner to design and produce hardware and HMI embedded tools. They needed a solution that would support them for at least 15 years, matching the lifespan of their project, and had specific requirements regarding pre-compliance and firmware support for EMC testing.

Solution

As a reliable and solution-oriented one-stop-shop partner, we took care of everything for the client. We handled the design, development, testing, assembly and production, allowing them to refocus on their core activities.

ClickTouch managed the entire production from custom-made glass, PCAP touch and optical bonding to custom casings, cables and embedded boards. The all-in-one solution fully met the high IP & EMC standards as well as the critical assembly requirements. We also added extra functionalities based on our experience and expertise (including 'secret until lit').

The client ultimately gained a state-of-the-art solution that gave them a significant advantage in the market.



One-stop-shop

ClickTouch is your one-stop-shop for Human Machine Interfaces (HMIs). We design, produce and install new technologies – taking care of everything from start to finish. Whether it's a single sensor or a complete HMI, our expert engineers finetune hardware and firmware to deliver a perfectly functioning solution that meets your needs.

We support you from start to finish – offering a seamless experience from rapid prototyping to excellent after-sales support.



Expertise

Discover our technological expertise in tuning, casing, assembly and more.



Cost efficiency

We offer unmatched quality at a price often unbeatable in the market.



Innovation

Always be the first to use the latest technologies thanks to our technological know-how.

They go further with us

BARCO

KEBA
Automation by innovation.

Miele

LIEBHERR

PETERSIME
INCUBATORS & HATCHERIES

SIEMENS

Screen printing

With our screen printing and digital printing lines in our own production facilities in Europe and Asia, we offer top-quality screens.

Overlay

We make our overlays in a wide range of materials and sizes. Standard sizes, customisation, a variable thickness or a specific coating? It's all possible. As a finishing touch, our backlighting provides that extra touch.

HMI

ClickTouch focuses on two different technologies: click technology (membrane keyboards) and touch technology (touch screens and buttons). Together with you, we consider which of the two technologies is most suitable. If necessary, we combine both technologies.

Display

We partner with the world's most renowned display suppliers. We also have expertise in various bonding options, including OCA, LOCA, SOCA, edge Bonding and mechanical assembly.

Housing

A custom-made housing that fully meets your requirements? We won't go for less. At ClickTouch, we provide both the design and production.

Cables

We have an extensive range of cables, available in different lengths and price ranges. Thus, we ensure optimal connectivity.

Embedded PC

Thanks to our close cooperation with renowned specialists, we can offer a wide range of embedded PCs, assuring you of the best performance.

Pre-compliance

At our headquarters in Gavere, we have state-of-the-art testing machines. This allows us to extensively test in advance whether your HMI solution works as expected.

Firmware

Your HMI interface should operate in a predictable and completely reliable manner in all environments and conditions. At ClickTouch, we make sure of that.



European Knowledge Center

At ClickTouch, knowledge is key. As a European Knowledge Centre, all our engineering is carried out by our own R&D department in Belgium.

We strictly adhere to European and international standards in all our processes – including when engaging suppliers – and monitor every link in our supply chain to ensure our products meet the highest levels of quality and reliability.



Successful projects

Our comprehensive approach fully supports you in your HMI project. Whether you need a standard solution or a fully customised one, unsure which technology to use, or want to develop a new idea, you can rely on our proven processes to ensure your project is a success.

Industry standards

We follow international industry standards for all our components – securing lifelong support for your HMI. From the initial design to final assembly, we aim for solutions that are state-of-the-art today and in the future.

Safety

We thoroughly test every component in your HMI to satisfy even the strictest safety standards. Leaving nothing to chance, we guarantee the delivery of secure and reliable HMI solutions.



We go the
extra mile in ...

support

quality

offering

service

speed

affordability

expertise

ClickTouch

Legen Heirweg 37
9890 Gavere, Belgium
+32 (0)9 384 73 73
info@clicktouch.eu
www.clicktouch.eu

